



## *The Husky II*

**More than you ever expected  
from a street sweeper.**





# The Husky II



**sweeps faster, cleaner  
and with less dust.**

**The large hopper lets  
you sweep longer.  
And when it's full, it  
will dump higher. Yet  
the Husky II costs  
less to buy and less to  
operate.**



## Specifications

### General

- Overall length: 258"
- Overall width: 102"
- Overall height: 106"
- Sweeping path: 120"
- Hopper capacity: 6 cubic yards volumetric
- Dump height max: 120"
- Wheelbase: 140"
- GVWR: 25,950 lb.
- Turning radius: 222"

### Engine, Auxiliary

- Manufacturer: Kubota
- Model: V2003T, 4 cylinder Turbo Diesel
- Displacement: 1999 C.C.
- Rated horsepower: 56 hp @ 2800 rpm
- Torque: 120 ft-lbs @ 2000 rpm

### Auxiliary Engine/Sweeper Instrumentation

- Tachometer and hour meter
- Engine oil pressure warning lamp
- Engine coolant temperature lamp
- Hydraulic fluid temperature lamp
- Hydraulic fluid low-level warning lamp
- Hydraulic filter warning lamp

## Sweeprite Mfg. Inc.

Box 3344, 1891 Albert Street N.  
Regina, SK Canada S4P 3H1  
Telephone: (306) 543-2020  
Fax: (306) 775-0447  
Toll Free: 1-888-446-4494  
Website: [www.sweeprite.com](http://www.sweeprite.com)  
E-mail: [sales@sweeprite.com](mailto:sales@sweeprite.com)

## Truck Options

- Isuzu FTR cab-over
- Sterling cab-over
- Freightliner cab-over
- Optional dual steering

## Gutter Brooms

- Number of brooms: 2
- Diameter: 36"
- Number of segments: 4
- Hydraulic direct drive: Variable and reversible
- Adjustment: Independent, left, right, up & down
- Controls: Pressure & wear, from cab
- Design: Free-floating spring suspension

## Main Broom

- "The Eliminator" (Patent pending)
- Steel core: 10" diameter x 58" long
- Hydraulic direct drive, variable and reversible
- Filled diameter, 36"
- Pressure and wear control, from cab

## Debris Hopper

- Material volume: 6 cubic yards volumetric
- Maximum dump height: 120"
- Minimum dump height: 36"
- Right side dump: Standard
- Dump capacity: 12,000 lbs.

## Water System

- "Water Saver" (patent pending)
- Capacity: 200 Gallons
- Tank Material: Polyethylene
- Electric pump (1): Diaphragm, 3 gpm
- Water system material: All plastic, non-corrosive

## Conveyor

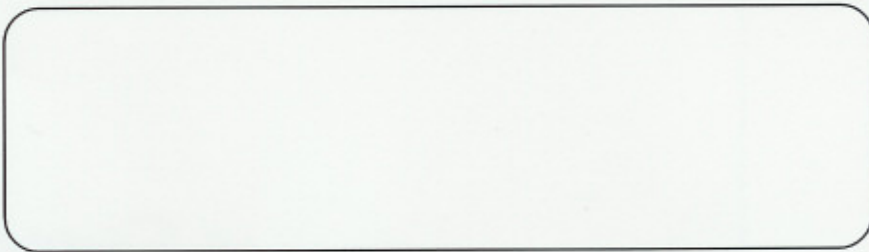
- Squeegee-type system
- Hydraulic direct drive, variable speed and reversible
- Relief valve protected

## Hydraulic System

- Tank capacity: 45 gallons
- Pump: Dual Tandem gear
- Pump capacity: 10 gpm/10 gpm
- Controls: Electric over hydraulic
- Hydraulic drive motors: All interchangeable
- Hydraulic fluid cooler: Air to oil

## Lighting system

- 2 Halogen headlamps, rectangular
- 2 Stop/tail lamps
- 2 turn signal lamps, front and rear
- Cab marker lamps and rear clearance lamps.
- Warning beacon & emergency flasher lamps.
- Back-up lamps, automatic with audible alarm.
- License plate lamp.



**For a complete list of specifications and options, please contact factory or your nearest dealer.  
We are continuously improving our products. Design, specifications and materials are subject to change without notice.**